



MEMO

Muscatine, IA

TO: City of Muscatine

DATE: March 12, 2013

FROM: Jeffrey Hillegonds, P.E.

SUBJECT: Mississippi Drive Corridor Study
Project Status Update

The Mississippi Drive Corridor Study has been in progress since Fall of 2010. Numerous field studies and analyses have been completed over the past 2+ years, as well as two public input meetings. In the summer of 2012, a preliminary Environmental Assessment (EA) document was completed and submitted to the Iowa DOT for review and comment.

Comments received after this review included concerns regarding the status of the cultural resources along the corridor. Recommendations were made by Iowa DOT regarding additional archaeological and historic investigation deemed necessary to fully investigate potential resources within the project study area. Further discussion with the Iowa DOT determined that there are two areas of concern along the corridor. The first is the Beach Lumber Company site (Archaeological Site No. 13MC242) near Carver Corner. The recommendation is to complete Phase II archaeological investigation on this site, which is anticipated in the Spring of 2013. The second area of concern is the downtown stretch of Mississippi Drive, between Linn Street and Mulberry Avenue, where proposed improvements will include utility rehabilitation as well as a rise in road grade (Sycamore to Mulberry) to help with flood control. There are several archaeological sites through the downtown portion of the corridor and Iowa DOT wants to have further investigation to determine if there are potential impacts to these resources.

A desk top utility review along the downtown portion of the corridor is underway and field investigation will continue in the spring, once the frost is out of the ground sufficiently to allow shovel testing.

The schedule for finalizing the EA and completing the project is unknown at this time, pending the results of the investigations described above.



Mississippi Drive Corridor
Phase 1 Environmental Study & Preliminary Engineering
Project Limits

- Formerly named “Front Street”
- Primary access route for downtown businesses
- Principal arterial – Segment of IA 92/
 (Business) US Route 61



Mississippi Drive Corridor
Phase 1 Environmental Study & Preliminary Engineering
Project Areas



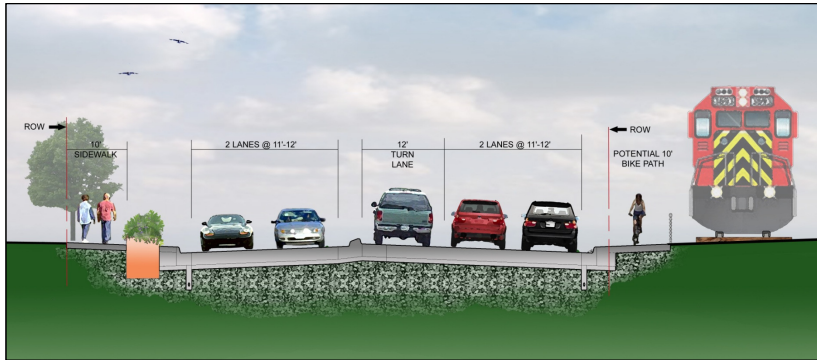
Mississippi Drive Corridor
Phase 1 Environmental Study & Preliminary Engineering
Phase I Process

- **Environmental Assessment Process**
 - Initiate Early Coordination (Completed)
 - Conduct Alternative Analysis (Completed)
 - Hold Public Meetings (2 Meetings Completed)
 - Assess Project Impacts (Completed)
 - **Address Archaeological Issues**
 - Prepare Environmental Assessment and 4(f) Statement
 - Hold Public Hearing
 - Prepare Final Environmental Document
- **Project Location Report**
- **Typical Length 18-24 Months (Currently 27 Months In)**



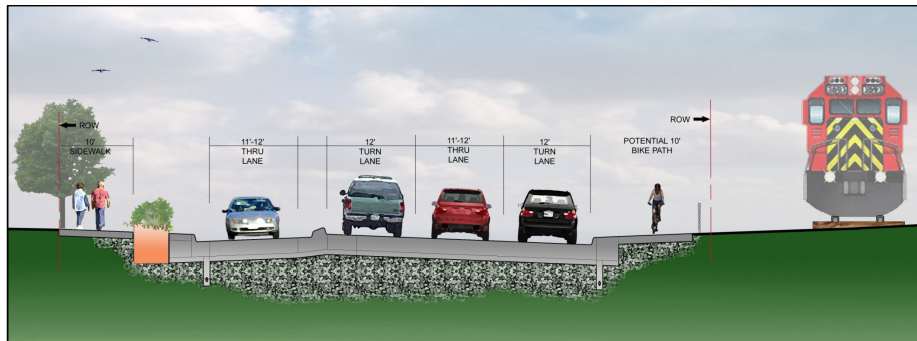
Mississippi Drive Corridor
Phase 1 Environmental Study & Preliminary Engineering
Overall Corridor Alternatives

5-Lane Option



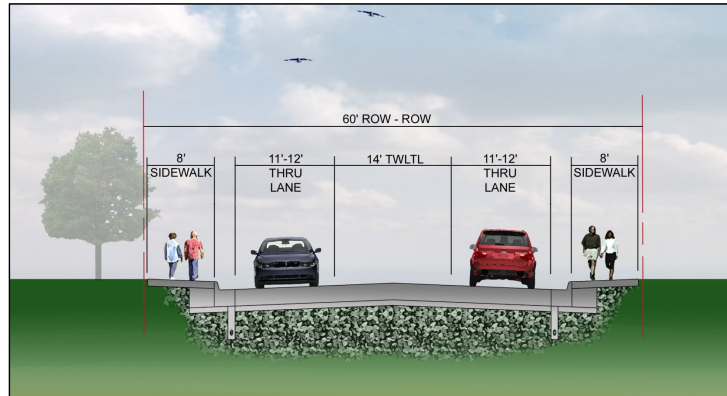
Mississippi Drive Corridor
Phase 1 Environmental Study & Preliminary Engineering
Overall Corridor Alternatives

3-Lane Option



Mississippi Drive Corridor
Phase 1 Environmental Study & Preliminary Engineering
Overall Corridor Alternatives

HNI/2nd Street and Carver Corner



Mississippi Drive Corridor
Phase 1 Environmental Study & Preliminary Engineering
Carver Corner Area Options



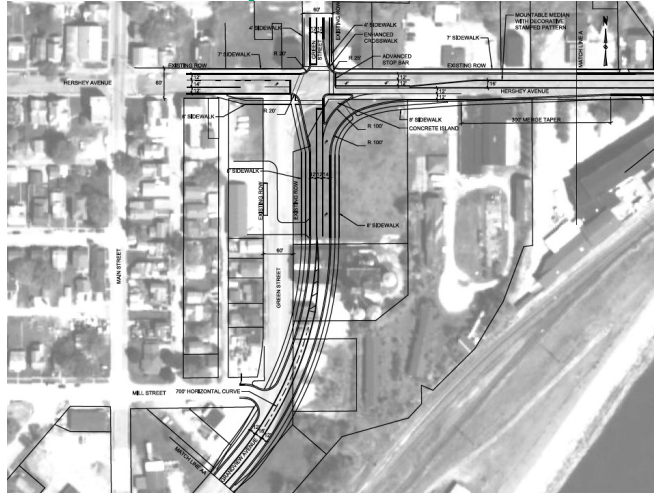
Mississippi Drive Corridor
Phase 1 Environmental Study & Preliminary Engineering
Option 1C - Signalized



Mississippi Drive Corridor
Phase 1 Environmental Study & Preliminary Engineering
Option 1C - Roundabout



Mississippi Drive Corridor
Phase 1 Environmental Study & Preliminary Engineering
Option 1D



Mississippi Drive Corridor
Phase 1 Environmental Study & Preliminary Engineering
Project Tasks and Schedule

Tasks

Preliminary EA Document (DOT Review Complete)
 Address Archaeological Issues
 Finalize EA and 4(f) Statement, Receive Signature
 Receive Signed EA and 4(f) Statement from FHWA
 EA and 4(f) Statement Distributed to Agencies
 Public Hearing
 Complete Preliminary Project Report
 Draft Finding of No Significant Impact (FONSI)
 Regulatory Review
 FONSI Signed by FHWA
 Final Project Report (All Project Work Complete)

Schedule

August 2012

-
-
-
-
-
-
-
-
-



Mississippi Drive Corridor
Phase 1 Environmental Study & Preliminary Engineering
Phase I Process

- ✓ Progress since July 2012 report to Council
 - Preliminary EA Completed and Reviewed by DOT.
 - FHWA concurrence received on potential 4(f) resources list.
 - Recommendations from DOT for additional investigation of archaeological sites along the route.
 - Discussion with DOT and City regarding options for the project.
 - Additional Investigation to be completed
 - Downtown (Utility Review, Additional Shovel Testing)
 - Carver Corner (Phase II Investigation)



Mississippi Drive Corridor
Phase 1 Environmental Study & Preliminary Engineering
Phase I Process

- ✓ Discussion of Archaeological Investigation Issues
 - Programmatic Agreement may be necessary to address areas that can not be completely cleared during study phase.
 - Phase II Archaeological Investigation in the Carver Corner area will define the presence/limits of any significant archaeological resources, and allow determination of eligibility for listing in the National Register of Historic Places (NRHP).
 - Schedule Implications



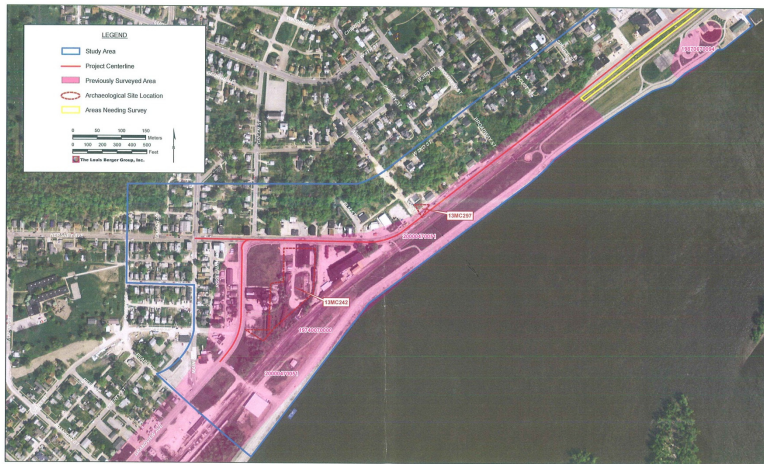


FIGURE 4c: Archaeological Resource Potential



FIGURE 5b: Locations of Shovel Tests

SOURCE: AOWW 2010



Mississippi Drive Corridor
Phase 1 Environmental Study & Preliminary Engineering
Construction Alternatives

- ✓ Construction Options Discussed
 - No Build
 - Full Reconstruction (Current Recommendation)
 - Gap Downtown
 - Rehabilitation Downtown (Limited Vertical Impact – See Below)
- ✓ Construction alternatives to address archaeological issues.
 - No vertical construction except for drainage inlets
 - Addressing flooding issues
 - Addressing pedestrian user issues (crossing lengths, sidewalk improvements)



Mississippi Drive Corridor
Phase 1 Environmental Study & Preliminary Engineering
Upcoming Activities

- ✓ Going forward
 - Complete additional Phase I investigation downtown in Spring, 2013 to verify potential impacts to archaeological resources, or verify no impact.
 - Complete Phase II investigation on the Beach Lumber Company site.
 - Determine eligibility for listing on NRHP for any historic resources, document findings, perform necessary mitigation.
 - The goal is to satisfy DOT, SHPO, and FHWA and receive a FONSI for the project.



