

## MEMORANDUM

TO: Gregg Mandsager, City Administrator  
FROM: Richard Klimes, Director of Parks and Recreation  
DATE: March 10, 2013  
RE: Review of Miscellaneous Park Projects

### INTRODUCTION:

Please accept this memo and the attached information as a request for the City Council to give a consensus approval on the following projects so that the projects may progress: Trail Signage, Jane McFate Memorial Trailhead Project, and the Weed Park Central Corridor Project.

### BACKGROUND:

The Weed Park Central Corridor Project consists of removing the Tennis Shelter, removing the tennis court fencing and nets and converting that paved area into a picnic table storage area, removing the old concession stand building and replacing it with a modular restroom building, and placing a 50X110 foot large outing shelter on the site where the old pool was located. These projects are part of the Shelter Replacement Plan and are in the City Capital Improvement Plan. With a consensus from Council we will attempt to gain private funding for these projects.

As the attached information explains, the Jane McFate Memorial Trailhead Project will involve placing a trailhead type shelter next to the trail in Weed Park between Colorado Street and the Weed Park Road. The project will consist of a message board kiosk, a shelter, a bike rack, a park bench, and a memorial dedication plaque. Private funds have been raised to complete this project.

Members of the Melon City Bike Club have developed a plan to place distance markers in half mile increments starting at Pearl City Station and progressing both up river and down river along the trail system on the Riverfront. The markers would be a composite 4X4 post with a metal marker to include trail distance and trail name. The bike club has donated the funding necessary to complete the trail from roughly Musser Park to Weed Park.

During the discussions of trail mileage markers, citizens and staff developed a destination trail marker plan that would basically provide multiple destinations and mileage on discrete signage that would be placed at various locations throughout the trail system to include: Riverfront, Greenbelt, Kent Stein Park, Weed Park, and Fuller Park.

### RECOMMENDATION/RATIONALE:

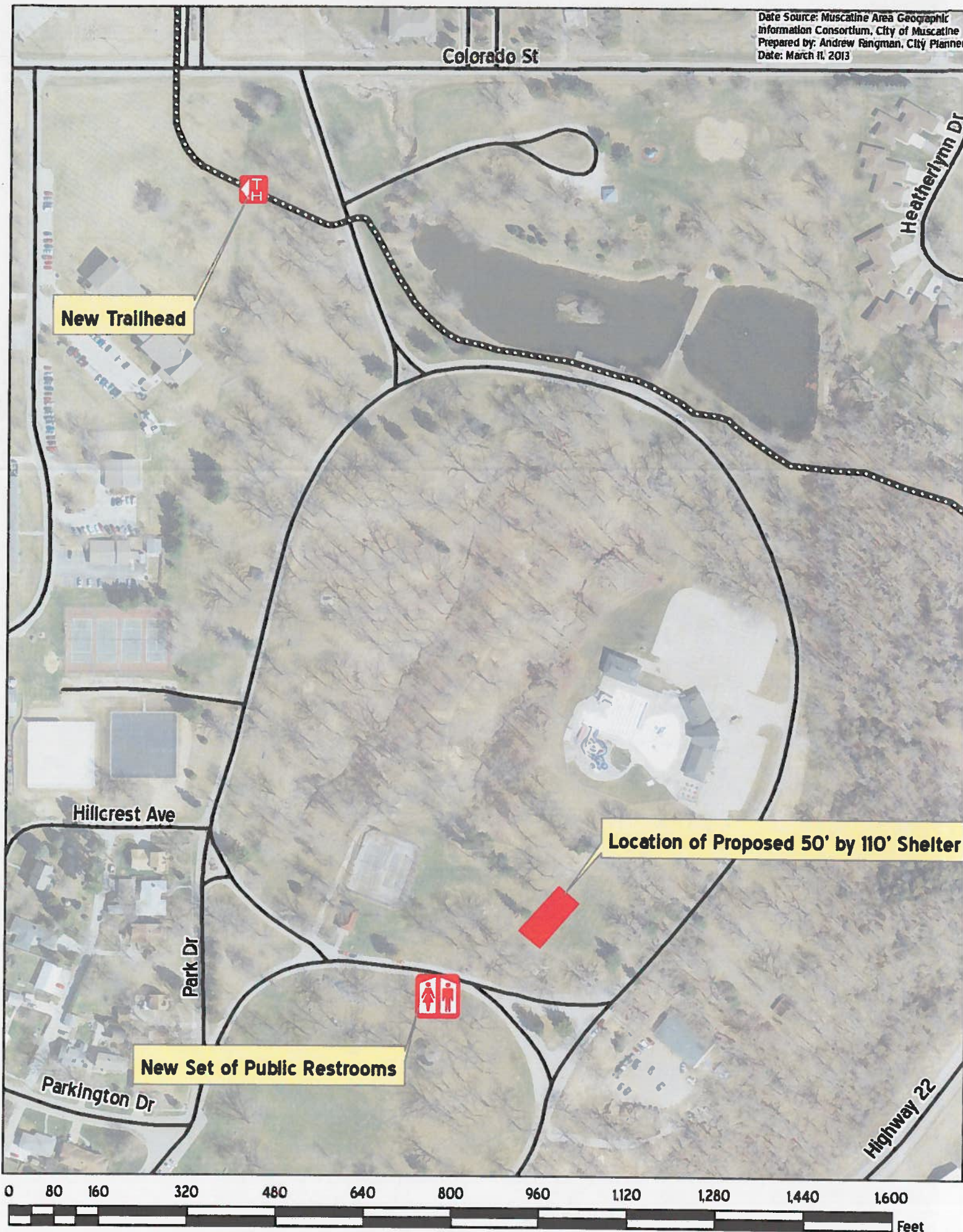
At this time, the City Council is requested to give their consensus on the Weed Park Central Corridor Project, the Jane McFate Memorial Trailhead Project, and on the Trail Marking Concept Plans.

The Recreation Advisory Commission did endorse each of these projects at their March 6, 2013 regular meeting.

**BACKUP INFORMATION:**

1. Trail Markings Proposal
2. Jane McFate Memorial Trailhead Project Proposal
3. Weed Park Central Corridor Project Pictures and Map

Thank you for your time and attention to this matter. Please contact me if you have any questions, comments, or concerns.







RAM 50X110



## Multiple User Restroom Models

### Skyline 1220 Restroom

The Skyline 1220 Model is an economical multi-user flush restroom building that is ADA compliant. This building has two rooms; two stalls and a sink per room. The building measures 12' x 20' and can handle a moderate to large volume of users. This building is delivered fully-assembled, pre-wired and pre-plumbed.

The Skyline has a wide variety of aesthetic choices, enabling it to easily blend with any surrounding. It has four concrete roofing options, the Tapered, the Front to Back Gable, the Left to Right Gable, and Custom. The Skyline Models also boast a variety of finish and color choices. This model comes standard with stainless steel fixtures, but other fixture options can be specified to meet your budgetary needs. The chase area also can be used for storage.



### Specifications Summary

- Meets IBC-2006, ANSI/ASCE 7-02, ACI 318-02, LRFD AISC 3rd edition ASD AISC 9th edition, CSI Manual of Standard Practices, PCI Design Handbook 9th edition requirements
- Roof load capacity: 350 psf (standard: 250 psf )
- Wind load: 130 mph (standard)
- Floor load: 250 psf, 5,000 psi steel-reinforced precast panels with welded connections. (standard: bolted connections)
- Bullet tested to UL-752, Level 4
- 18-gauge galvanized steel insulation doors, tamper-proof hinges, dead-bolt lock, door stop and holder
- Lifetime roof: post-tensioned by a single continuous tendon creating

## **Jane McFate Memorial Trailhead Project**

### **Concept Plan and Cost Estimate**

Project Coordinators: Peg Heither	Diana Tank
2228 Fareway Drive	2809 Musquota Drive
Muscataine, IA 52761	Muscataine, IA 52761
563.260.0126	563.260.1135

The Trailhead will consist of 4 main components: 10' x 12' Pavilion, Large Message Board, Park Bench, and a Bike Rack. The **pavilion** structure will straddle the existing trail at the Colorado Street entrance to Weed Park. It will house a large **message/map board** and a **park bench**. Adjacent to the structure will be a **bike rack**. The trailhead pavilion will be constructed on a concrete pad surrounded by garden-like landscaping. A commemorative plaque will identify the structure as the "Jane McFate Memorial Trailhead". Labor and funding for this project will be provided by family and friends of Jane McFate. The Community Foundation of Muscatine is holding cash donations in the amount of **\$7000.00** for the completion of this project.

Component details and cost estimates:

10' x 12' Deluxe Vinyl Pavilion, from Amish Designers, price includes tax, shipping, all materials and hardware, and instructions. \$4462.00

Double-sided Message/Map Board, w/two surface-mount posts & bases 53.5" l x 40" h	\$1486.00
--	-----------

Park-It Powder Coated Bike Rack 7 bike capacity (surface mount)	\$248.85
--	----------

Shipping: Double-sided board and rack	\$273.95
---------------------------------------	----------

<b>TOTAL:</b>	<b>\$6470.80</b>
---------------	------------------

Time frame for completion of this project is Memorial Day Weekend.







Dear Diana,

Each of our pavilions are made to order and custom to some extent, but some of the pavilions on our website and in our catalog are 100% custom, and others are developed from a combination of standard and optional features.

So the purpose of this email is to clarify what we have available from patterns that are the most cost-effective.

- The vinyl and wood we use has a limited lifetime warranty so you can count on your pavilion staying beautiful for as long as you own it. (With the tough economy, many builders have switched to cheaper materials. )
- We use Premium #1 pressure treated Southern Yellow Pine. There are 6 grades of Premium #1. We use the next to the highest grade. You can get the highest grade for 25% more.
- Post skirts are included. (If those aren't important to you, let us know and there is a deduction. )
- The Hip or 4 sided roof is standard with a 5/12 pitch.
- Pressure treated Tongue and Groove Sheathing with exposed wood rafters in wood and vinyl pavilions. (Most builders use untreated pine in the sheathing.)
- 30 Year architectural shingles.
- Most pavilions have 5" x 5" 4-piece laminated wood posts that are beautiful and functional. Larger pavilions have 6" x 6" or 8" x 8" posts.
- Corner rafters are either double 2" x 4" main rafters or 2" x 6" on larger pavilions. The rest of the rafters are 16" on center.
- Stainless steel screws are used throughout. The only nails are used in trim pieces and they are stainless steel as well.
- Standard beam height is approximately 8' but we can go higher - and don't charge much extra. All of our option and upgrade charges are reasonable.
- Most beams are triple 2" x 8" with a piece of 1/2" plywood sandwiched in between. Vinyl pavilion beams are covered with pvc trim.
- Pavilions with 16' span or less have 4 posts. We can do an 18' span without a center post, but it requires a heavier beam and a slightly heavier price.
- Cupolas are not standard on pavilions - but are available.
- Electric kits are a very popular option which comes as an assembly that includes wiring, trim to hide the wiring, a 2 outlet receptacle, and a switch. The wire runs from underneath the post up the trim to the receptacle, to the switch, and up to the top of the rafters.

You can customize the roof style, posts, and roof pitch. We can do arched beams, extra overhang, 10" tapered columns (on vinyl pavilions). You can add a cupola or double roof and can choose from optional cedar shakes, rubber slate, and metal roof materials.

On custom projects, in many but not all cases, we can get you a solid quote before you have to invest in the design process.

Thank you very much for getting in touch with us. We look forward to building your pavilion.

Sincerely,

Jim Adams  
Senior Designer  
800-849-5175





Amish Designers  
1323 Georgetown Rd.  
Quarryville, Pennsylvania 17566  
United States  
(717) 205-2118

## Proposal - Sales Order

Date	Invoice #
February 15, 2013	2785

TO:

Diana Tank

SHIP TO:

Diana Tank

tankdiana8@gmail.com

(563) 260-1135

Qty	Description	Unit Price	Total
1	10' x 12' Deluxe Vinyl Pavilion - \$5,335.00		
	\$5,335.00	\$5,335.00	
1	Sales Tax - \$0.00		
	\$0.00	\$0.00	
4	No Deluxe Post Skirts - -\$200.00 (Qty 4)		
	-\$200.00	-\$50.00	
1	20% Pre-Season Discount - -\$1,027.00		
	-\$1,027.00	-\$1,027.00	
1	Discounted Shipping - \$354.00		
	\$354.00	\$354.00	
1	30 year architectural shingles - \$0.00		
	\$0.00	\$0.00	
1	Lifetime Warranty Materials - \$0.00		
	\$0.00	\$0.00	
1	Choice of vinyl or pressure treated tongue and groove ceiling - \$0.00		
	\$0.00	\$0.00	
1	Stainless Steel Brackets - \$0.00		
	\$0.00	\$0.00	
1	Post dimensions will be provided before kit arrives for footer installation - \$0.00		
	\$0.00	\$0.00	
<b>Total Purchases</b>			
	<b>\$4,462.00</b>		

### Other Terms

Customer is responsible for site prep, level site, and building permits. If site is not level and properly prepared, additional time, travel and/or material charges will apply. Please call 717-205-2115 for site prep instructions.

Please sign sales order near the bottom and scan/email to sales@amishdesigners.com or fax to 800-789-8197.

# **Proposal for the Initiation of Signage for the Muscatine Trail System**

**March 6, 2012**



## **Muscatine Trail Signage Proposal**

**The intent of the of the proposal is to provide the vehicle to allow the consumption of funds allocated by the Muscatine Bike Club to place signage on the Muscatine trail system.**

In December of 2012 the Muscatine Bike club allocated \$750.00 toward the purchase, delivery, installation and upkeep of signage for the Muscatine trail system.

In the attempt to disperse the funds it became apparent that there was no agency ready to receive the funds and put them to use. After further investigation it was found that there had not been a signage standard yet set for the trail system.

It is the purpose of this proposal to remedy the situations existing as barriers to the commencement of the signage project. This will allow the consumption of the allocated funds.

The proposal consists of the following portions:

1. A signage standard for installation on the trail.
2. The site of the initiation of the trail system
3. The frequency of the signage
4. The priority of the installation of the signage

It is not the intent of the Bike Club to propose a signage project without the support of those affected by the concept or its implementation. This proposal has been a living document being modified after communication with the Muscatine Trail Committee, Randy Hill and members of his staff and Richard Klimes and members of his staff. Their input is included and is greatly appreciated.

### **Signage Standard**

The considerations for the trail markers include:

Visibility  
Installation  
Maintenance  
Cost  
Expandability (adding posts at some time in the future)  
Vandalism  
Durability  
Mowing/trimming

The concept is to have the signs consisting of a treated 4 x 4 post approximately 4 feet high covered and with a composite wood grain sleeve and capped with a composite top. The signs would be highway grade engineering aluminum with reflective lettering.

The suggestion is to use the Ultra Deck composite available at Menards is the reddish-brown color.

The signs would resemble the mile marker signs found en route to Davenport from Muscatine approximate 4 by 5 inch size. The lettering would be white on brown with a white border (again like the highway mile markers). The signs would have two holes supplied for ease of installation to the posts.

The concept for the sign is included as an attachment (except it is in black and white).

The concept is to have the direction from the main trail head at the top of the sign (N or S) with the mileage from the main trail head beneath to the nearest 0.1 miles (1.5).

### **The site of Initiation of the Main Trail**

The consensus of the groups would place the main trail head at the trail heading down river from Pearl City Station. All other signage would be registered from that location.

The Pearl City location has many desirable trail head amenities including:

Parking

Restrooms

Water

Seating – shade

Proximity to a main road

Ease of egress from the main road

Close proximity to dining

### **Frequency of Signage**

It is suggested to have markers every 0.5 miles on the trail. This will have probably higher utility for those using the trail for shorter distances (walkers and runners).

### **Priority of Installation of Signage**

This proposal does not include the signage for all the trails in the Muscatine area. At this time we are limiting our focus to the main trail extending from Houser, through Kent Stein Park, Musser Park, Week Park ending north of University.

Although it would be desirable it is not likely that the \$750.00 from the Bike Club will be able to provide signage for the entire main trail. The idea is to prioritize the placement of signage and add to the signage as additional funds become available.

As additional resources become available the concept is to continue to extend the signage until the task is complete. There may be other funds available to increase the budget for the initial placement of signage, but none have been committed at this time. Although there is no firm commitment, the bike club indicated the possibility of providing additional funding in upcoming years. We will continue to pursue opportunities to provide the maximum signage at the time of the initial placement and then after to extend/improve the signage. We are also looking for support from Menards to provide materials or discount the cost of the materials.

The priority of installation of the signage is as follows:



1. The levee trail – between the riverfront and Musser Park
2. The trail between the riverfront and Weed Park
3. The trail from Weed Park to Solomon Rd.
4. The remainder of the trail (hopefully eventually extending to Fruitland)

The priority is to provide the directions and mileage signage for the Muscatine trail and add signage at a later time to designate the trails that share the same route (Running River Trail & American Discovery Trail). At certain portions of the trail, three trails may share the Muscatine Trail.

At this time we have the funding to possibly provide 10 posts.

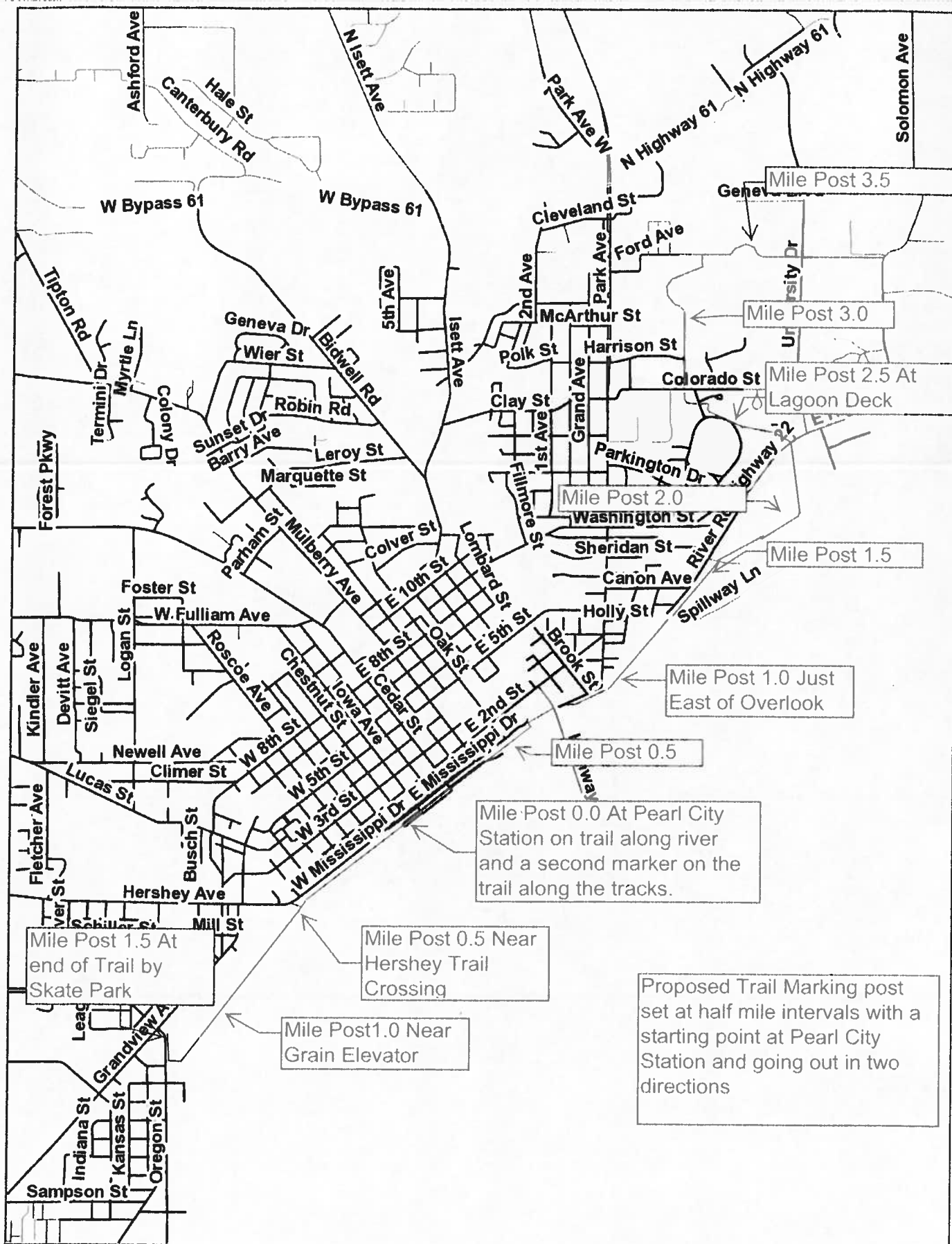
Thanks,

Dave Bender

benderdave@bfusa.com

563 262-2602

563 263-4049





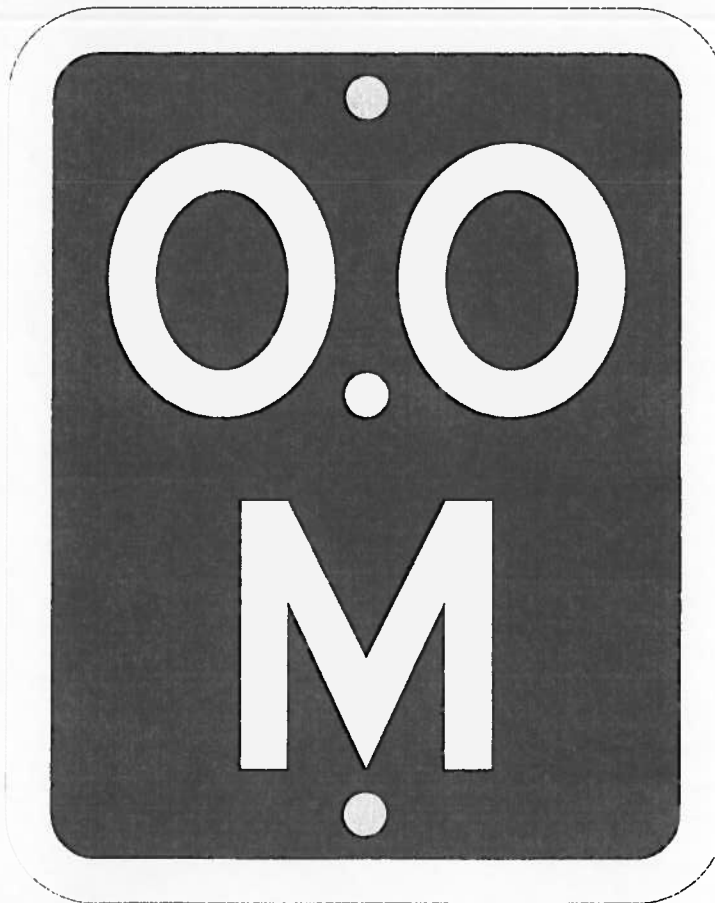


**Iowa Prison Industries - Sign Division** 11499.14681.1

Company: Muscatine Bike Club  
Layout Date: 2/21/2013  
Designed By: Mike Wildt  
Substrate: K080ALUM  
Punch Spec: 1/2" Radius, 1/4" Holes, 4" Center  
Fonts Used: HGD 1.5"  
Colors Used: White/Brown  
Sheeting: HIP  
Special Notes: None

Width: 4"  
Height: 5"  
Border Width: 1/4"  
Border Inset:  
Two-Sided: False

Note: Colors are not exactly representative of the final product. Computer monitors do not match colors exactly from one to the other.



\*Signs are manufactured to meet the reflectivity and substrate that each customer is billed for. Occasionally, and especially on smaller sizes, signs will meet or exceed what the customer has ordered in either sheeting or substrate, at no additional cost to the customer. This is done to utilize material in an effort to keep customer costs as low as possible.

Layout Fees may be Applicable.  
Property of Iowa Prison Industries  
Sign Division, Anamosa, IA.  
**FOR CUSTOMER REVIEW ONLY**  
Not to be duplicated or shared without  
written permission from the Plant Manager



WELCOME TO

MUSSER PARK

---

PEARL CITY STATION

1.3 MILES

---

WEED PARK

3.2 MILES

---

SOLOMON ROAD

5.3 MILES

